

BathAlarm 3500™ Model 960-3500

Amp Hour or Timer Alarm

Ultra simple for the operator.
 Extremely versatile for supervisor.



Product Description:

The **NEW** Model 960-3500 BathAlarm™ provides an ampere or time counter with only three operator functions: Alarm set, Alarm re-set, and running total display. This allows an operator to intuitively perform a precisely timed plating operation with very little instruction.

Although simple to operate, the BathAlarm™ will accept all the necessary data that is needed to set it up for any size rectifier or shunt. It also has many features which can be selected and edited on your computer. This is accomplished by using a USB connection and a simple program that allows the supervisor to input all the necessary rectifier information as well as selecting and customizing the features that are required. The information is then stored in the instrument, and it is ready for use. Later changes and modifications are just as easy.

Distributor:

Applications:

- **Bath maintenance alarm.**
Using the alarm set, operators can perform bath maintenance at programmed amp hour intervals..
- **Plate to precise thickness**
The alarm set will alert the operator at the amp hour or time count that produces the desired thickness.
- **Provide permanent history of bath**
The total count provides a history of the bath which can only be reset by the supervisor.
- **Optional relays for external functions.**
Two optional relays can be ordered for external use. They can be used for an external alarm, or to shut down a rectifier.

Features of the Bath Alarm™

1. Can be set up for any size rectifier and shunt value.
2. Total count can be re-set only by supervisor.
3. Read in amp hours, amp minutes or set for automatic timer in seconds.
4. Count up to set point or down from set point.
5. Audible alarm (93 dB) enabled by supervisor. Re-set by operator.
6. Display can be programmed to flash before, at or after the alarm set point.
7. Optional relays can be ordered with terminals for external functions.
8. USB plug for connection to computer (Cable not included)
9. Wall adaptor for power.

Specifications:

Power:	115 V AC 50/60 Hz. Wall Adapter
Input Signal:	mV signal from shunt equals rectifier full scale output.
Signal Cable:	10 Ft. twisted pair
Height:	5 inches
Width:	5 inches
Depth:	2 inches

Windows set-up procedure

Shunt Information: Maximum output of rectifier equals millivolt output of shunt.

Counts: Enables interval and total count to be changed or reset to zero

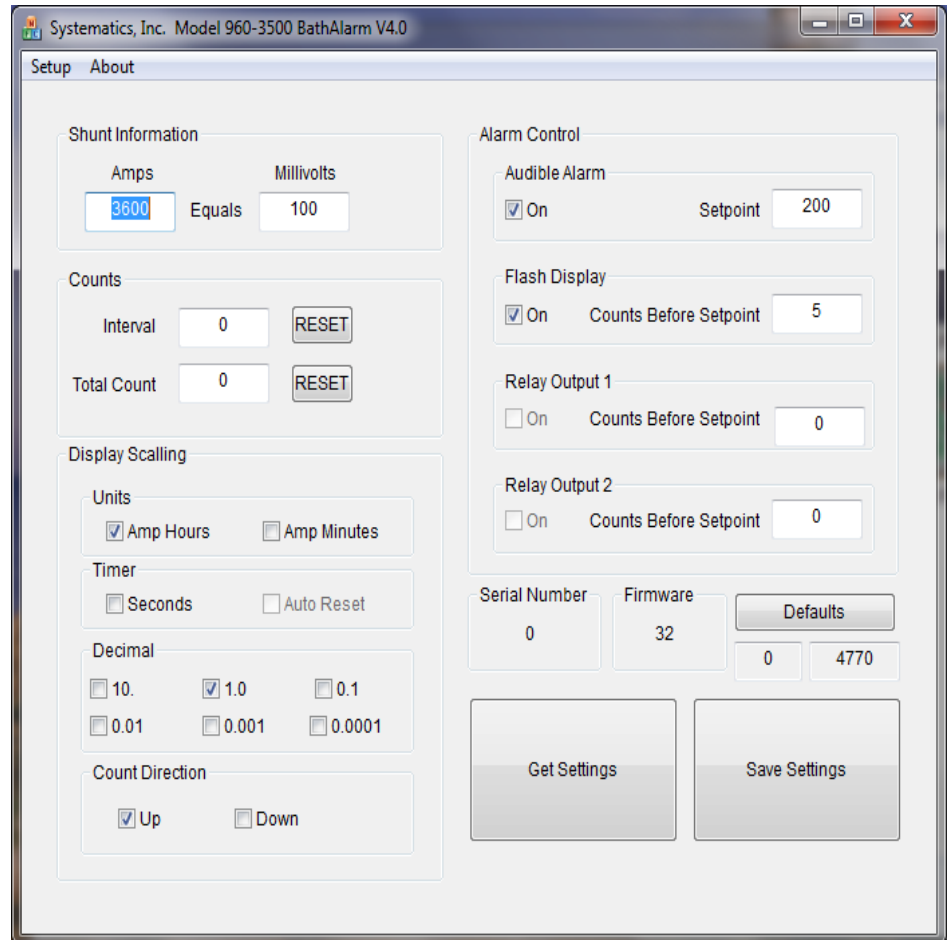
Display Scaling: Set amp hour or amp minute units, decimal point setting, and count direction.

Timer Selection Seconds converts instrument to a timer in seconds. Amp units and a decimal selection are disabled. Auto Reset starts timer when rack enters plating bath.

Alarm Control: Audible alarm set point can be set here as well as on instrument. Count display can be programmed to flash before set point. Optional relay(s) if ordered can be programmed to energize before or at set point.

Serial number is not alterable.

Get Settings retrieves stored data in the instrument; **Save Settings** downloads and saves data into the instrument.



LED Indicator lights tell the operator if the display units are amp hours or amp minutes. (Disabled in Timer Mode) Also indicates if the display is the alarm set, alarm count or total count.

Touch either Alarm Set button to display the alarm set point. Hold the up or down button to increment or decrement the setting. Hold to accelerate

Momentary button displays a running total. Can be re-set only with computer.

Touch alarm button to silence the audible. Hold to re-set alarm count.

Ordering Information

960-3510	Audible Alarm only	\$395.00
960-3511	One Audible Alarm and One Relay Output	\$460.00
960-3512	One Audible Alarm and Two Relay Outputs	\$525.00